

IGA PLAN APPROVED UNDER No.SRA/ENG/2984/PN/ML/AP DATED 22 AUG 2013

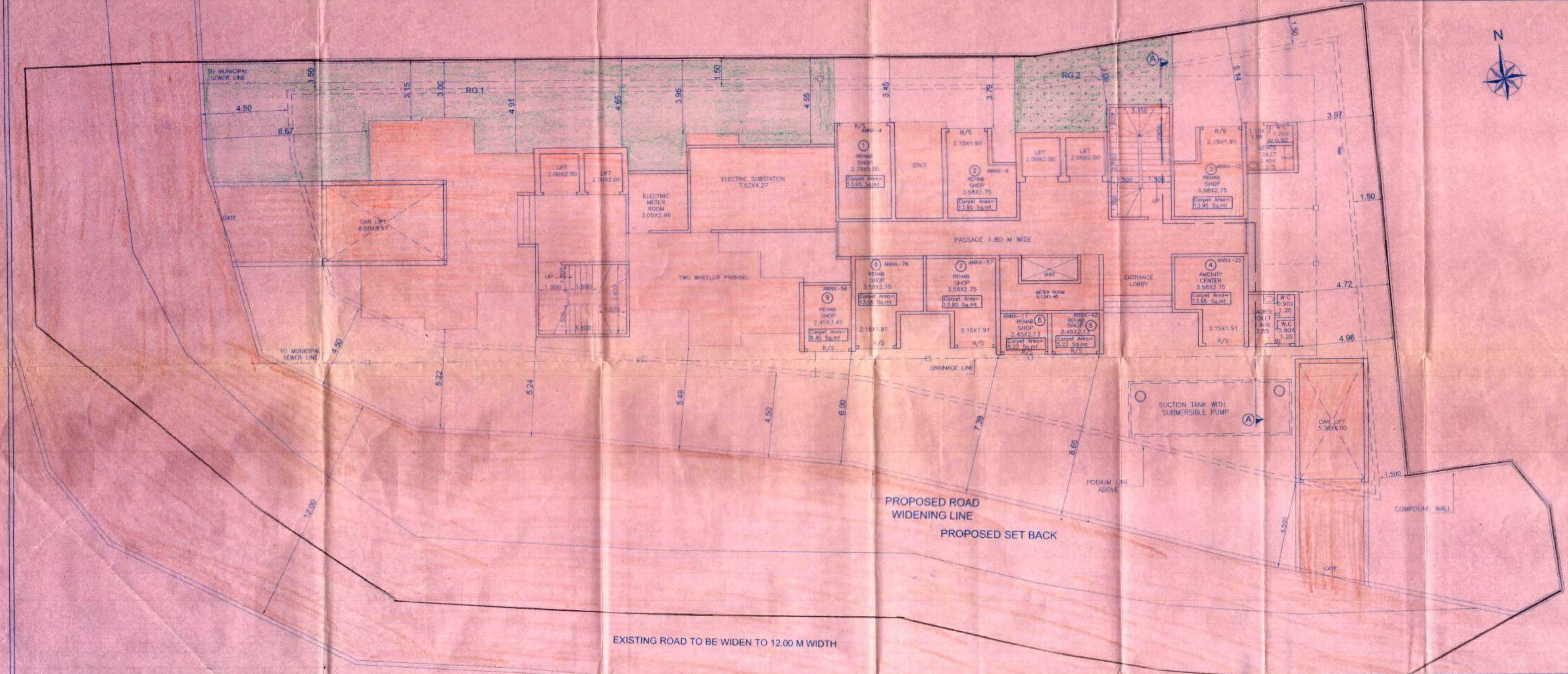
**STAMP OF APPROVAL OF PLAN 2/8**

Approved subject to the condition mentioned in this office permission Letter no. SRA/ENG/2984/PN/ML/AP Dt. 22 AUG 2013

Executive Engineer  
Slum Rehabilitation Authority

CONTENTS OF SHEET

GROUND FLOOR PLAN OF BUILDING



LAYOUT PLAN  
SCALE - 1:100

V. S. VAIDYA & Co.		Signature of Architect/LS			
ARCHITECT, ENGINEERS & REGD. VALUERS		<i>[Signature]</i>			
437, MID. RAJASTHAN BLDG., DOKSAHAR PHALKE RD. DADAR (E)					
DEVELOPERS		Signature of Owners			
SIDDHARTH ENTERPRISES (PRARTHANA GROUPS OF COMPANIES)		<i>[Signature]</i>			
SOCIETY VALANI NETAJI CO-OP HSG SOC. (PROP.)					
PROJECT: PROPOSED SLUM REHABILITATION SCHEME ON CTS NO. 2 (PT) OF VILLAGE VALNAI AT MALAD (W).					
DESCRIPTION GROUND FLOOR LAYOUT PLAN OF COMPOSITE BLDG (JCA APPROVAL)					
JOB NO.	DRAWING NO.	SCALE	DRN. BY	SHEET NO.	CHECKED
5088	SRA/JCA	1:100	PRAVINA	2/8	
Z:\ARCH\JPN_5088\5088_PFD.DWG FOR SRA\5088.Dwg FOR SRA\JCA\5088 M-01 ICA APP					