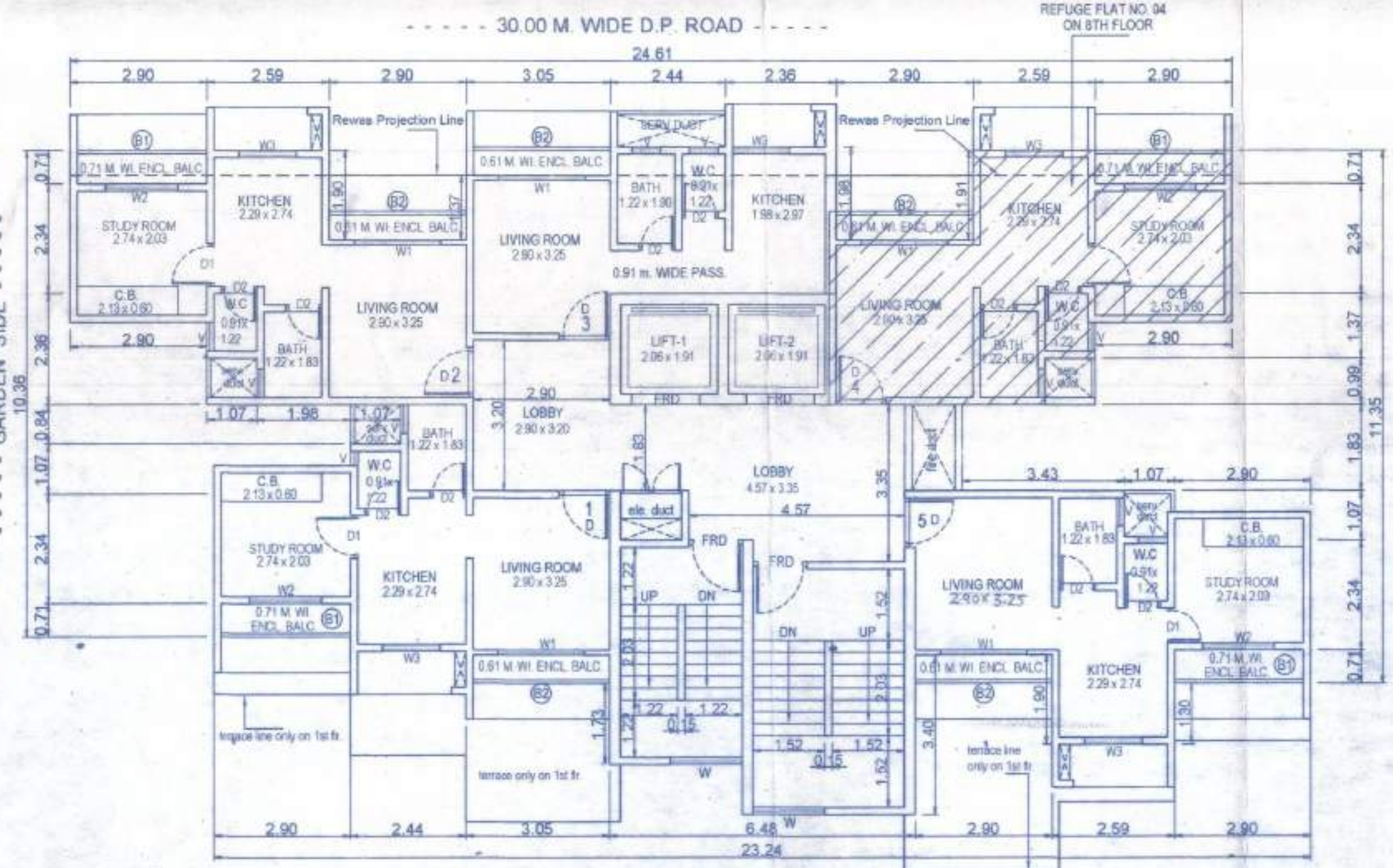
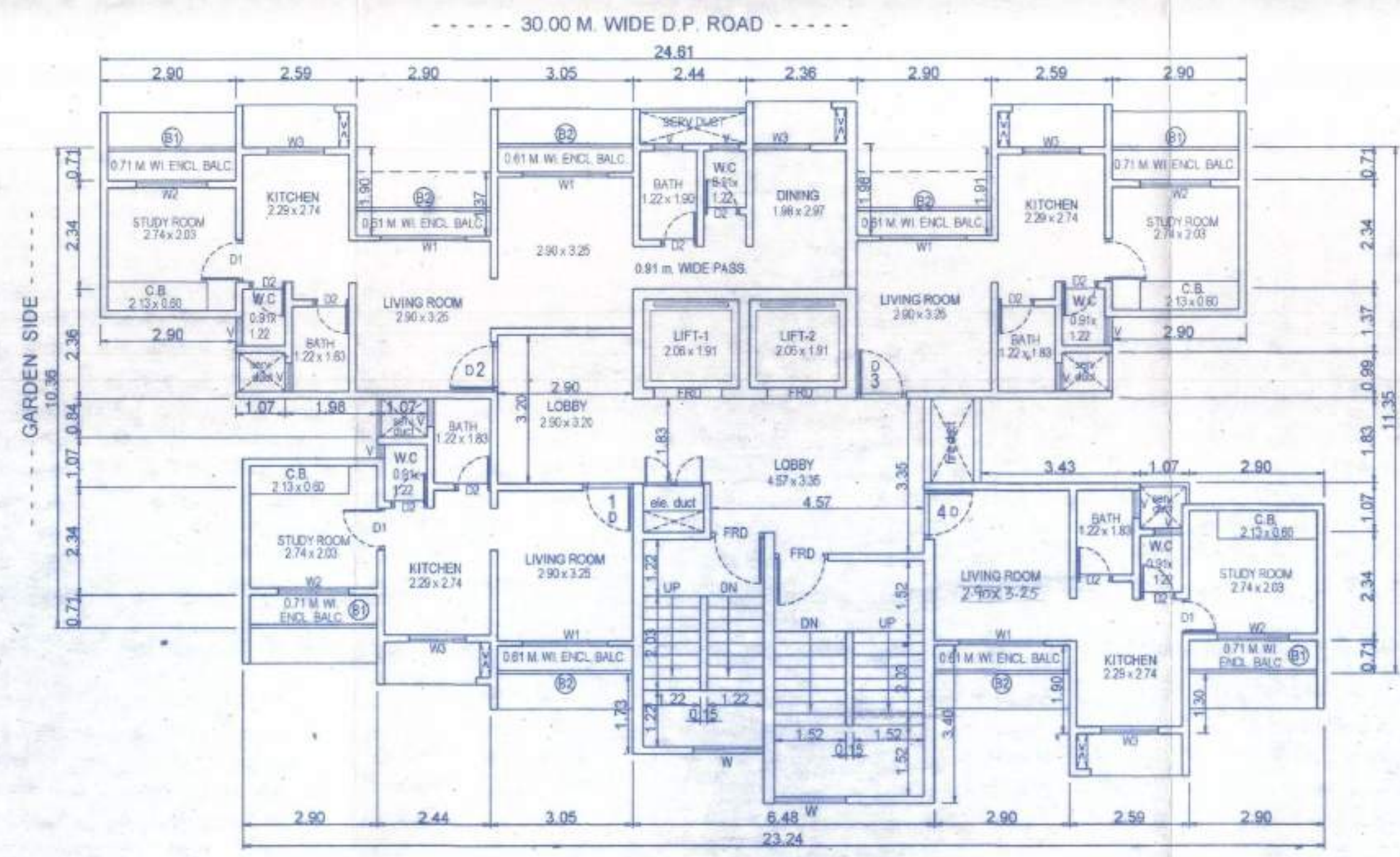


CONTENT OF SHEET
FLOOR PLANS, AREA DIAGRAM, AREA CALCULATIONS, SECTIONS
BLDG. - A1 ( GR. (pt.) + ST. (pt.) + 1ST TO 16TH FLOORS)
STAMP OF APPROVAL OF PLANS

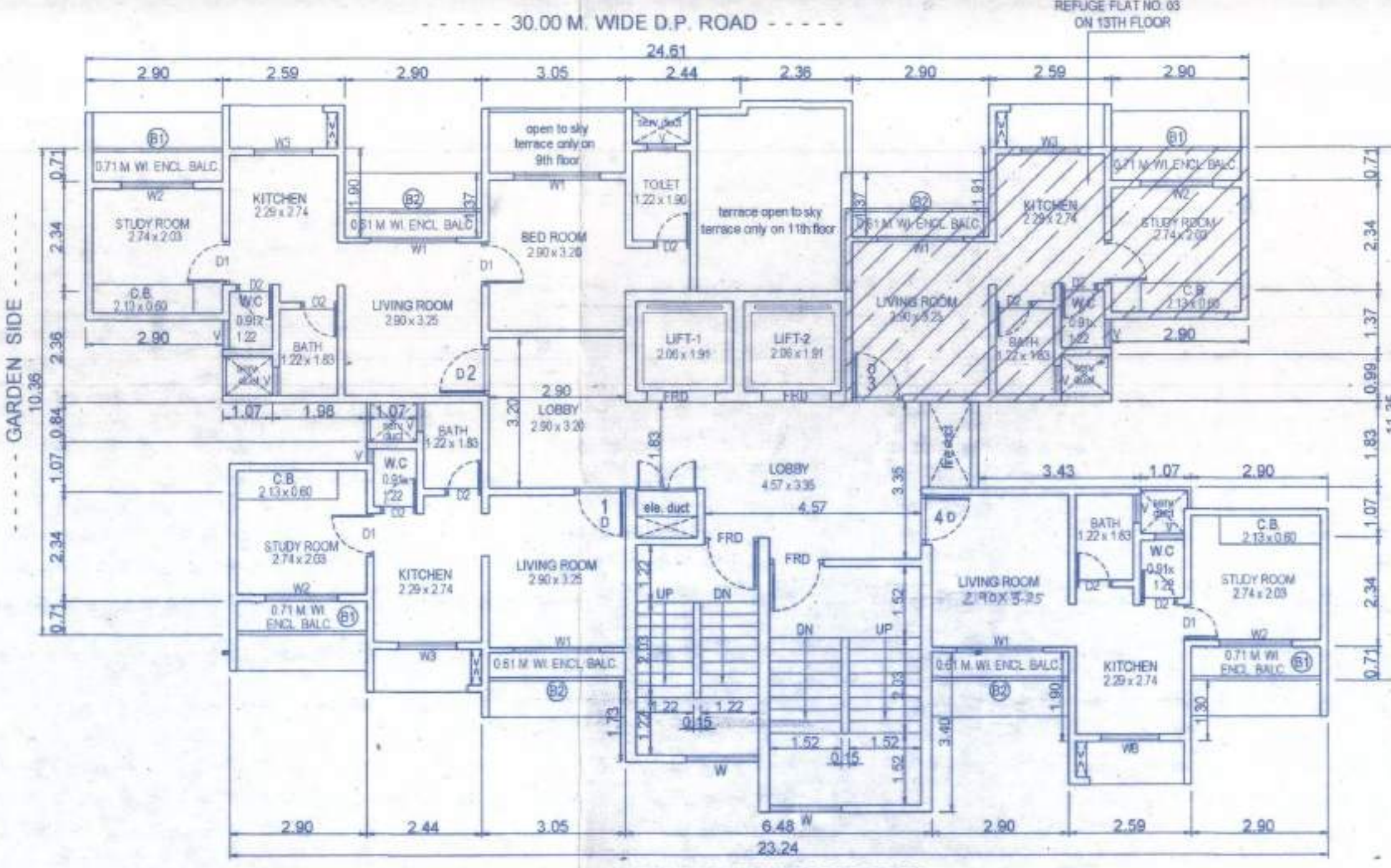
Plans are approved Subject to conditions
Prescribed in Permit No. V.P. 316/06.50/18
TMC/ID-09/19/3022/18 Dated: 25/03/2019
Deputy Engineer (TOD)
Executive Engineer (TOD)
Thane Municipal Corporation
The City of Thane



TYPICAL FLOOR PLAN (1ST TO 9TH FLOOR) SCALE: 1:100

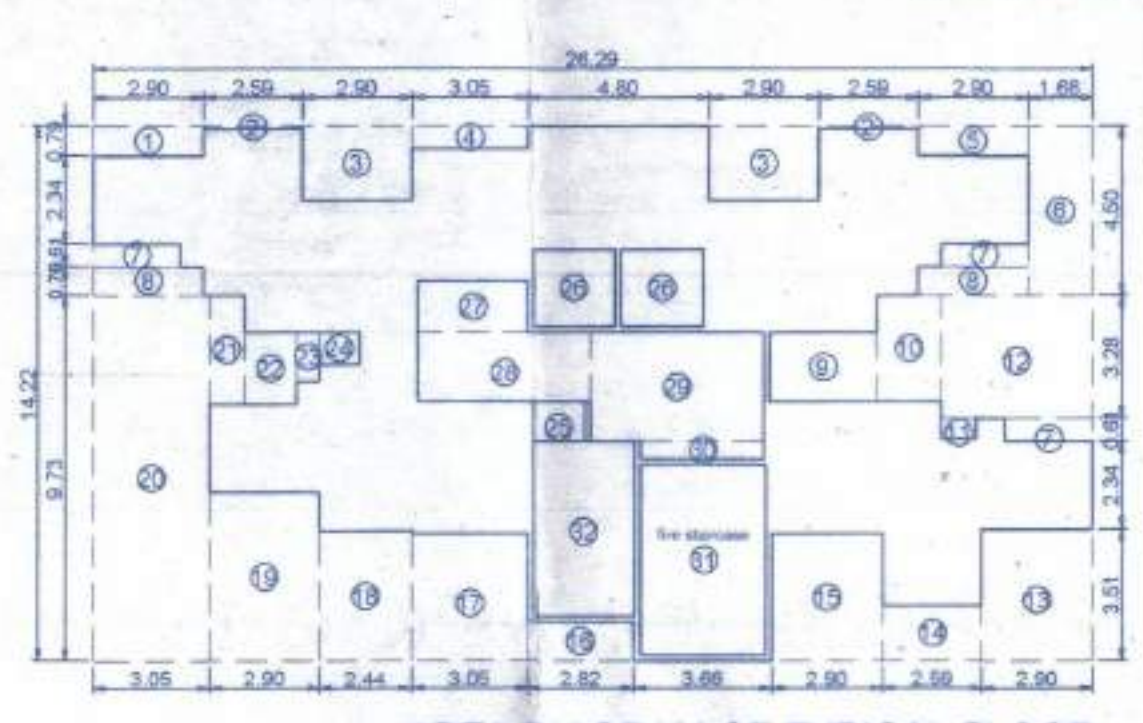


10TH FLOOR PLAN SCALE: 1:100



TYPICAL FLOOR PLAN (11TH TO 16TH FLOOR) SCALE: 1:100

Table with 2 columns: Item No., Description, and Area. Contains area calculations for typical floor (2nd to 7th, 9th & 10th floor).

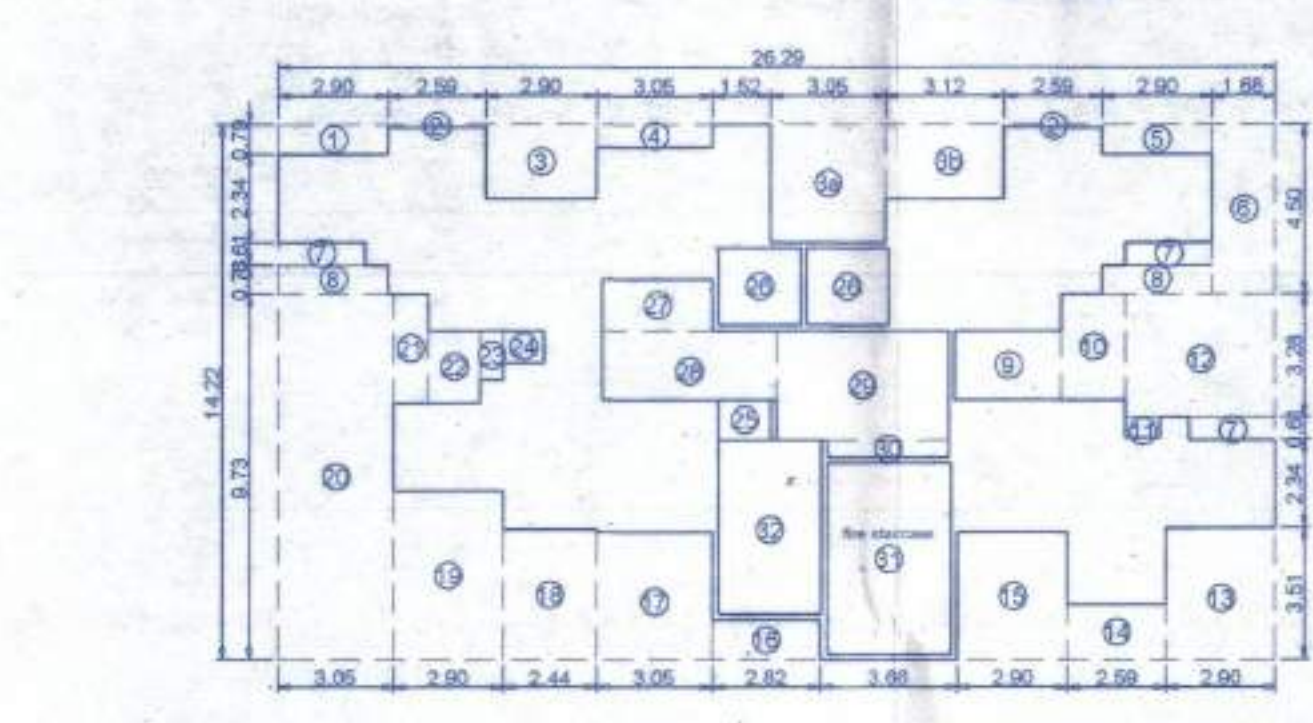


AREA DIAGRAM OF TYPICAL FLOOR (1ST TO 7TH, 9TH & 10TH FLOOR) SCALE: 1:200

Table with 2 columns: Item No., Description, and Area. Contains balcony area calculations for typical floor.

Table with 2 columns: Item No., Description, and Area. Contains area calculations for first floor.

Table with 2 columns: Item No., Description, and Area. Contains balcony area calculations for 1st floor.



AREA DIAGRAM OF TYPICAL FLOOR (11TH, 12 & 14TH TO 16TH FLOOR) SCALE: 1:200

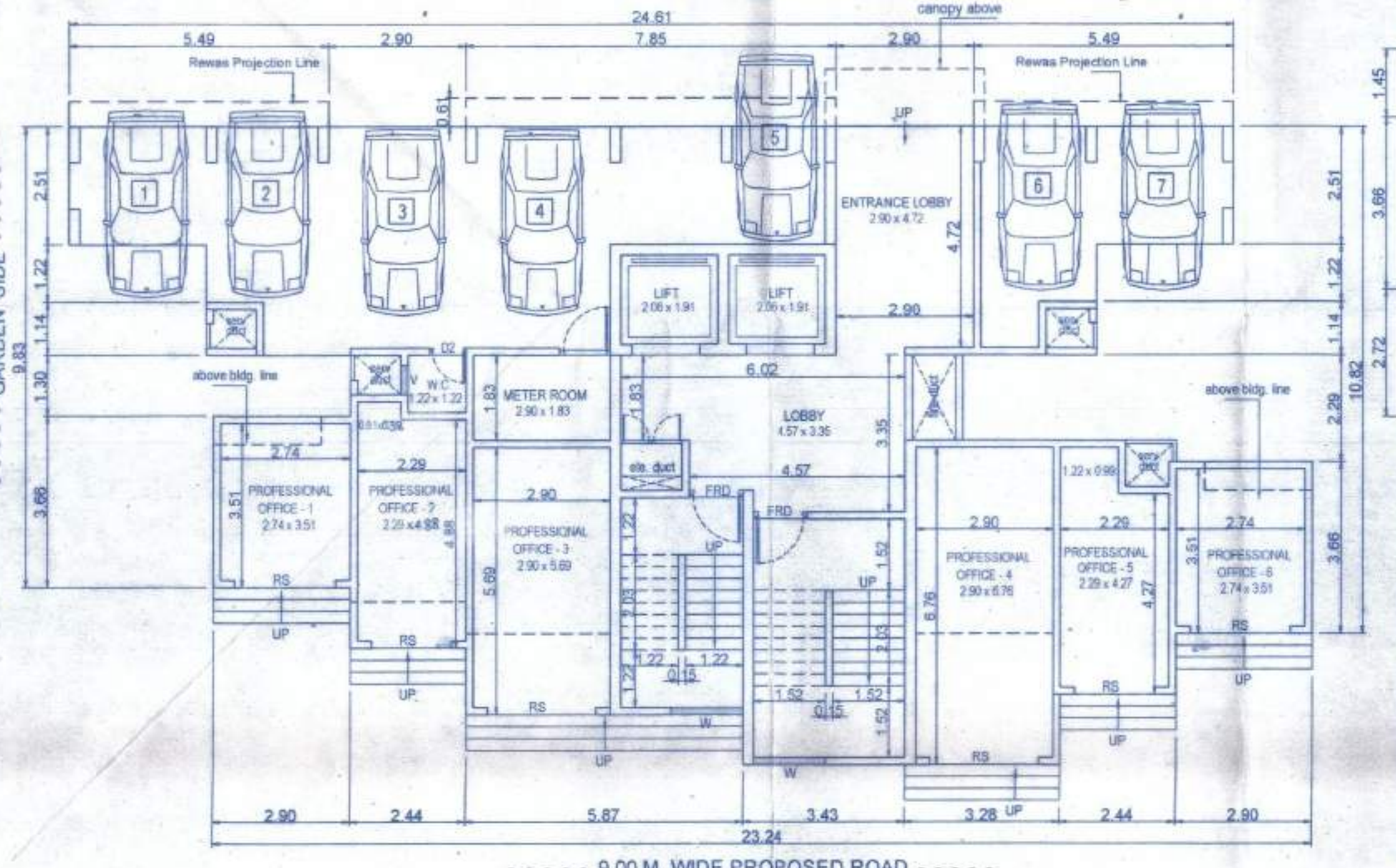
Table with 2 columns: Item No., Description, and Area. Contains area calculations for staircase & lobby (1st to 16th floor).

Table with 2 columns: Item No., Description, and Area. Contains balcony area calculations for 8th floor.

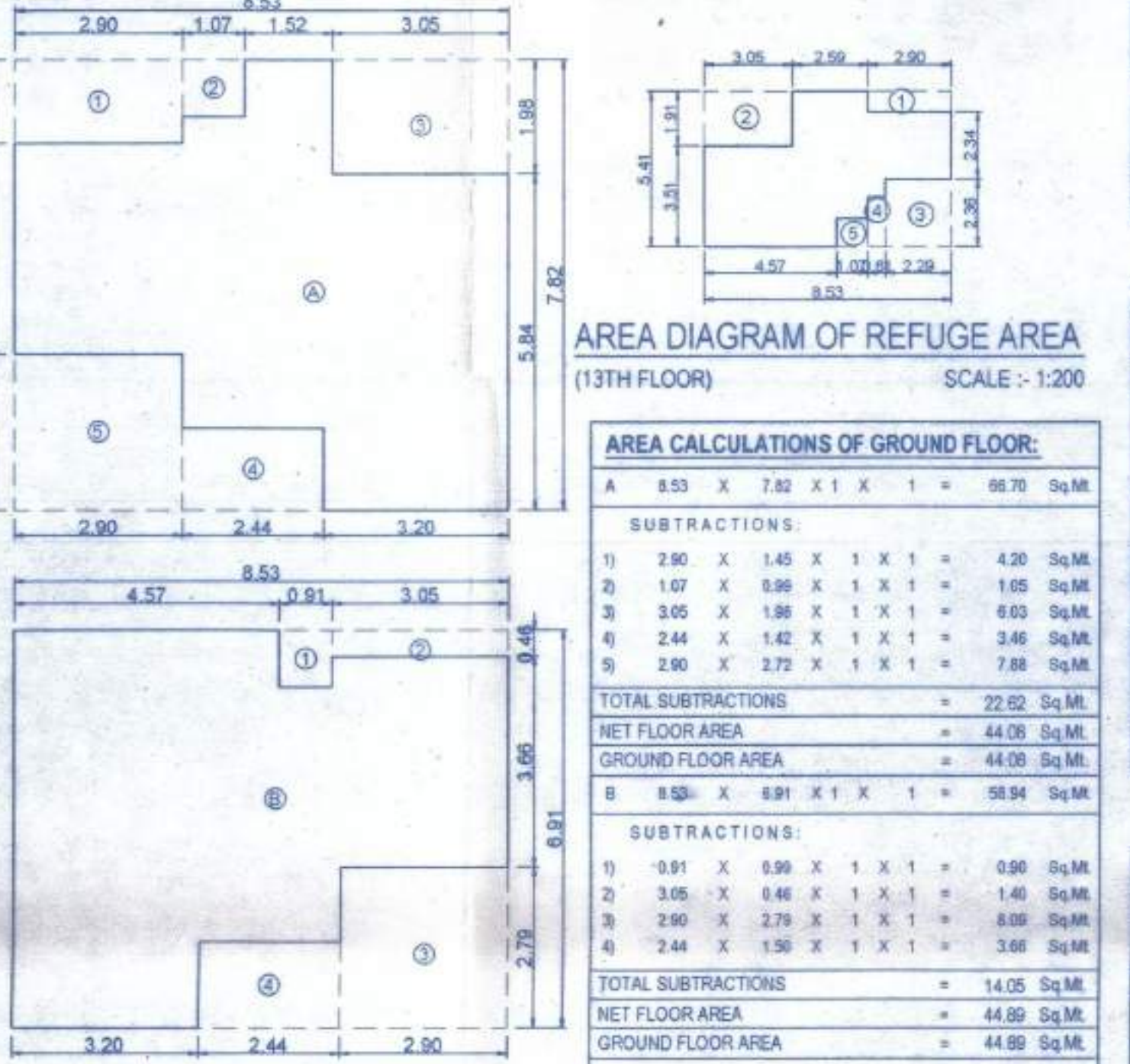
AREA DIAGRAM OF REFUGE AREA (8TH FLOOR) SCALE: 1:200

Table with 2 columns: Item No., Description, and Area. Contains area calculations for 8th floor refuge area.

Table with 2 columns: Item No., Description, and Area. Contains area calculations for typical floor (11th, 12th & 14th to 16th floor).



GR.(pt.) + ST.(pt.) FLOOR PLAN SCALE: 1:100



AREA DIAGRAM OF GROUND FLOOR SCALE: 1:200

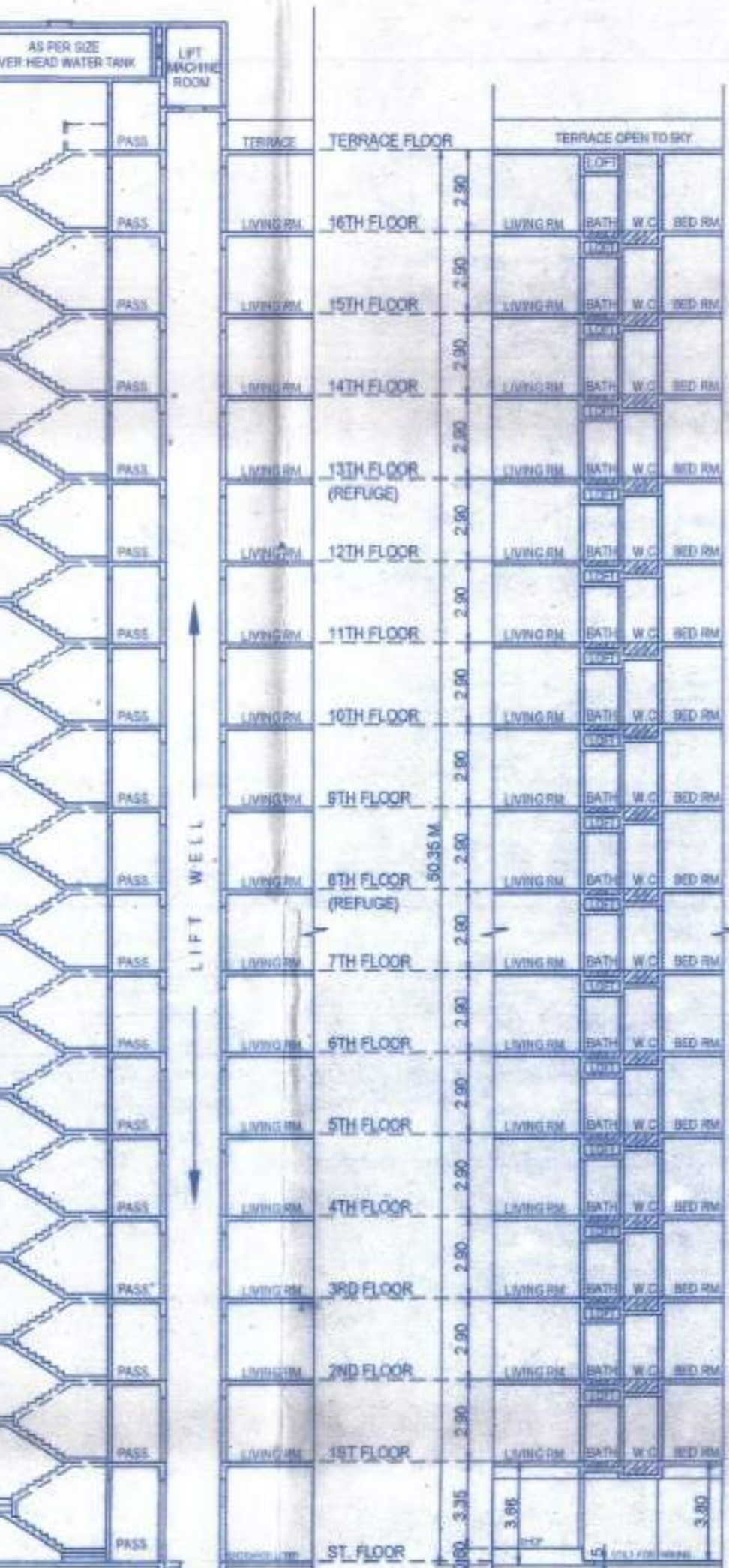
Table with 2 columns: Item No., Description, and Area. Contains area calculations for ground floor.

Table with 2 columns: Item No., Description, and Area. Contains area calculations for 13th floor refuge area.

Table with 2 columns: Item No., Description, and Area. Contains area calculations for typical floor (11th, 12th & 14th to 16th floor).

Table with 2 columns: Item No., Description, and Area. Contains balcony area calculations for 13th floor.

Table with 2 columns: Item No., Description, and Area. Contains balcony area calculations for typical floor (11th, 12th & 14th to 16th floor).



SECTION: A-A' SCALE: 1:100 SECTION: B-B' SCALE: 1:100

Table with 4 columns: DR/W, SIZE, C/L, DESCRIPTION. Lists door and window specifications.

Table with 2 columns: Area Type, Area. Contains summary of proposed municipal and residential areas.

CERTIFICATE OF AREA
CERTIFIED THAT THE PLOT UNDER REFERENCE WAS SURVEYED BY ME ON ... AND THE DIMENSIONS OF SIDES, ETC. OF PLOT STATED ON PLAN ARE AS MEASURED ON SITE AND THE AREA SO WORKED OUT TALLIES WITH THE AREA STATED IN DOCUMENTS OWNERSHIP.

SIGNATURE OF LICENSED ARCHITECT
SIGNATURE OF ARCHITECT
ARCHITECT'S NAME & ADDRESS: SAMEER S. LOTKE & ASSOCIATES Architect
JOB No., DWG No., SCALE: AS STATED, DATE: 02-11-2018, DRAWN BY: Sandesh, CHECKED BY: ssi