



STAMP OF APPROVAL

ST. & P. AREA CALCULATION FOR "A" BLDG (FIRE)  
S 4.30 x 3.30 x 1 14.19  
L 1.98 x 3.30 x 1 6.53  
TOTAL 20.72

ST & PASS AREA CALCULATION  
GROUND FLOOR FOR "A" BLDG  
S 4.15 x 3.30 13.69  
PI 1.50 x 9.35 14.02  
TOTAL 27.71

ST & PASS AREA CALCULATION  
1st to 4th FLOOR FOR "A" BLDG (FIRE)  
S 4.30 x 3.30 x 1 14.19  
L 1.98 x 3.30 x 1 6.53  
TOTAL 20.72

ST & PASS AREA CALCULATION  
GROUND FLOOR FOR "B" BLDG  
S 4.80 x 3.30 15.84  
L 2.13 x 2.13 4.53  
TOTAL 20.37

ST & PASS AREA CALCULATION  
TYPICAL FLOOR FOR "B" BLDG  
S 4.80 x 3.00 14.40  
P 2.55 x 9.53 24.30  
PI 2.13 x 1.02 2.17  
TOTAL 40.87

ST & PASS AREA CALCULATION  
GROUND FLOOR FOR "B" BLDG (FIRE)  
S 4.80 x 3.30 15.84  
L 2.13 x 2.13 4.53  
TOTAL 20.37

ST & PASS AREA CALCULATION  
TYPICAL FLOOR FOR "B" BLDG (FIRE)  
S 4.80 x 3.00 14.40  
P 1.83 x 9.53 17.57  
PI 2.13 x 1.02 2.17  
TOTAL 34.14

TOTAL STAIRCASE & PASS = 20.37 + 40.87 = 61.24

### BALCONY & STAIRCASE AREA CALCULATIONS

ITEM	FLOOR	PERMISSIBLE (10% OF FLOOR AREA)	PROPOSED	EXCESS
BALCONY "A" BLDG	FIRST	388.32 x 10% = 38.83	22.77	---
	SECOND	388.32 x 10% = 38.83	22.77	---
	THIRD	388.32 x 10% = 38.83	22.77	---
	FOURTH	388.32 x 10% = 38.83	22.77	---
ST. & PASS "A" BLDG = 188.25				---
"B" BLDG	FIRST	211.05 x 10% = 21.10	11.41	---
	SECOND	211.05 x 10% = 21.10	11.41	---
	THIRD	211.05 x 10% = 21.10	11.41	---
	FOURTH	211.05 x 10% = 21.10	11.41	---
ST. & PASS "B" BLDG = 45.64				---
BALCONY STAIRCASE AND PASSAGE	20% OF PERM. BUILTUP AREA	2650.75 x 0.20 = 530.15	373.10 + 136.72 = 509.82	---

### AREA CALCULATION FOR GR FLR "A" BLDG (COMMERCIAL)

ITEM	DESCRIPTION	AREA
A	16.64 x 43.77	728.33
DEDUCTION		
1	7.37 x 7.02	51.73
2	5.32 x 3.20	17.02
3	1.26 x 2.90	3.65
4	7/4 x (5.11+2.63) x 2.99	11.37
5	3.03 x 2.63	7.96
6	3.10 x 1.61	4.99
7	6.28 x 3.87	24.30
8	6.73 x 1.68 x 3	33.91
9	6.28 x 2.62 x 2	32.90
10	6.43 x 1.47	9.45
11	7.21 x 2.13 x 2	30.71
12	6.28 x 5.09	31.96
13	6.43 x 1.50	9.64
14	6.73 x 1.65	11.10
15	6.28 x 1.35	8.47
16	3.10 x 2.52	7.81
17	6.28 x 2.38	14.94
TOTAL		312.11
728.33 - 312.11		416.22
GR FLR BU AREA		= 416.22

### AREA CALCULATION FOR 1st to 4th FLOOR "A" BLDG.

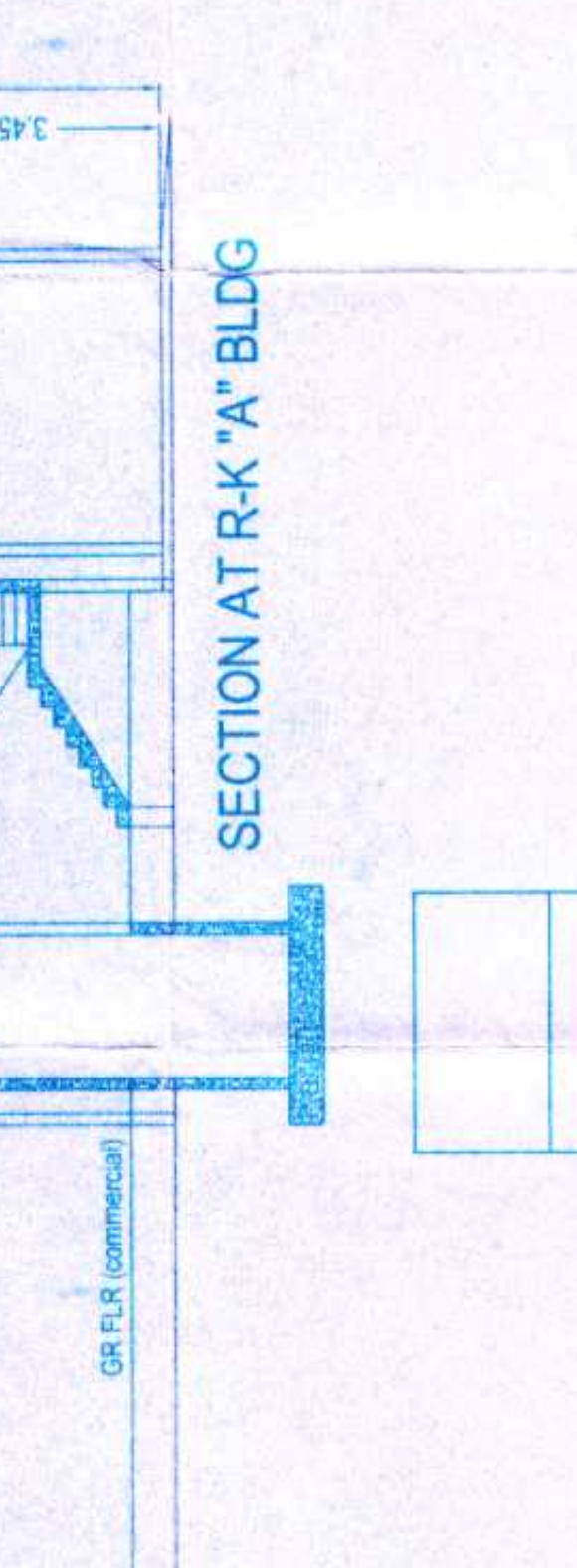
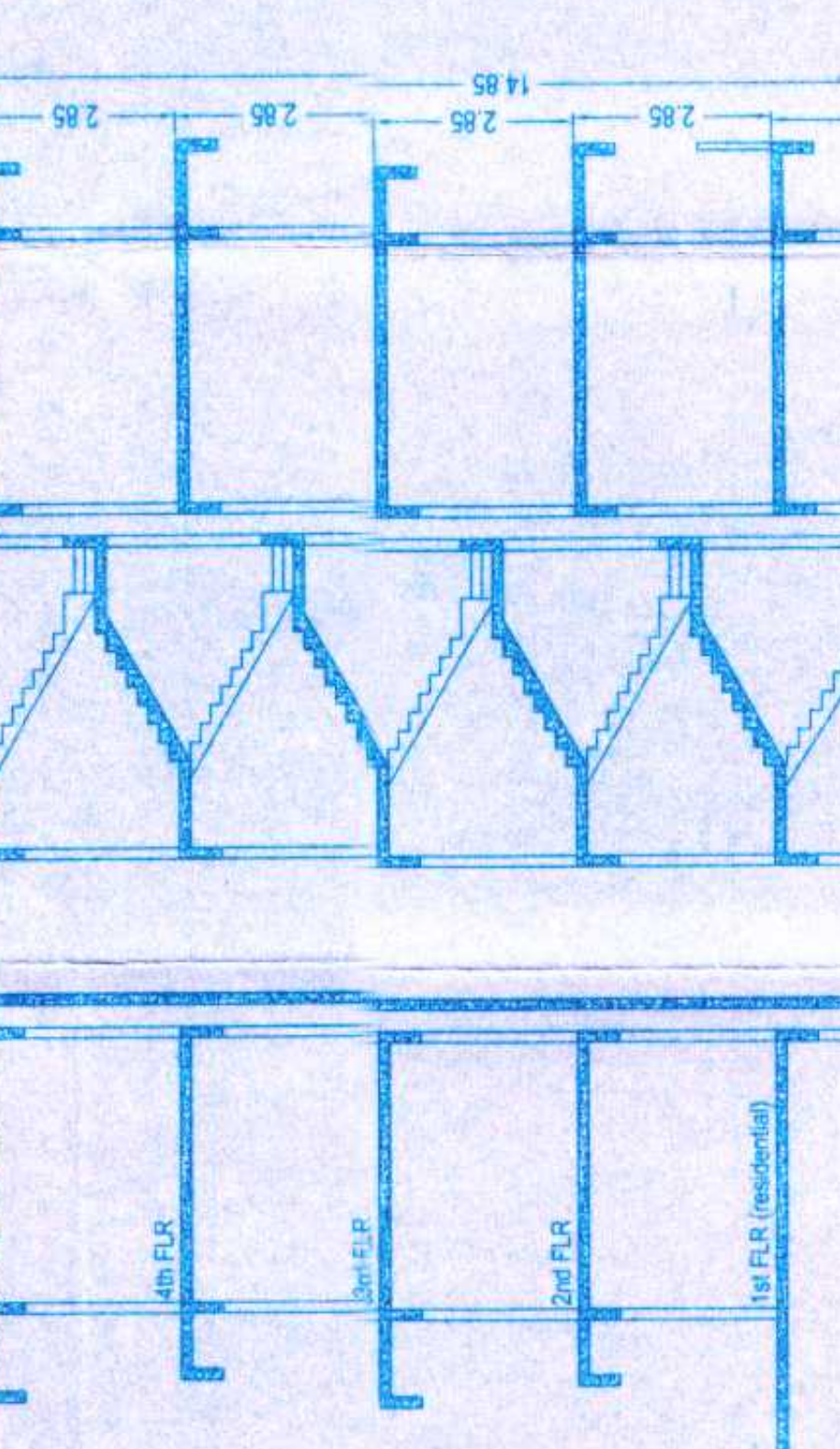
ITEM	DESCRIPTION	AREA
A	17.65 x 36.75	644.63
DEDUCTION		
1	0.72 x 3.20 x 4	9.21
2	1.35 x 2.47 x 2	6.66
3	0.78 x 1.17 x 2	1.82
4	3.96 x 3.58 x 2	28.33
5	3.25 x 0.97 x 2	6.30
6	0.78 x 2.28 x 2	3.55
7	2.13 x 2.17 x 2	10.52
8	1.36 x 5.95 x 4	32.36
9	0.72 x 6.25 x 2	9.00
10	6.13 x 2.28 x 2	27.95
11	9.49 x 4.79	45.45
S	4.15 x 3.00 x 2	24.90
L	1.83 x 3.00 x 2	10.98
P	6.13 x 2.32 x 2	28.44
D	0.30 x 1.68 x 8	4.03
D1	2.95 x 1.83 x 2	10.79
TOTAL		280.31
644.63 - 280.31		364.32
TOTAL BU AREA = 388.32 x 4th Flr = 1553.28		

### BALCONY AREA CALCULATION FOR "B" BLDG

ITEM	DESCRIPTION	AREA
B1	0.80 x 3.17 x 4	11.41
TOTAL		11.41

### AREA CALCULATION FOR 1st to 4th FLOOR "B" BLDG

ITEM	DESCRIPTION	AREA
A	17.15 x 22.19	380.55
DEDUCTION		
1	3.17 x 1.07 x 4	13.44
2	5.95 x 2.44 x 2	29.03
3	3.17 x 2.25 x 4	28.53
4	0.49 x 3.48 x 2	3.41
5	0.37 x 3.30 x 2	2.44
6	2.77 x 3.05 x 2	16.89
S	4.80 x 3.00 x 2	28.80
L	1.83 x 1.83 x 2	6.69
P	2.55 x 9.53	24.30
PI	2.13 x 1.02 x 2	4.34
D	1.83 x 3.18 x 2	11.63
TOTAL		169.50
380.55 - 169.50		211.05
TOTAL BU AREA = 211.05 x 4th flr = 844.20		



### BALCONY AREA CALCULATION FOR "A" BLDG

ITEM	DESCRIPTION	AREA
B1	0.90 x 3.20 x 4	11.52
B2	0.90 x 6.25 x 2	11.25
TOTAL		22.77

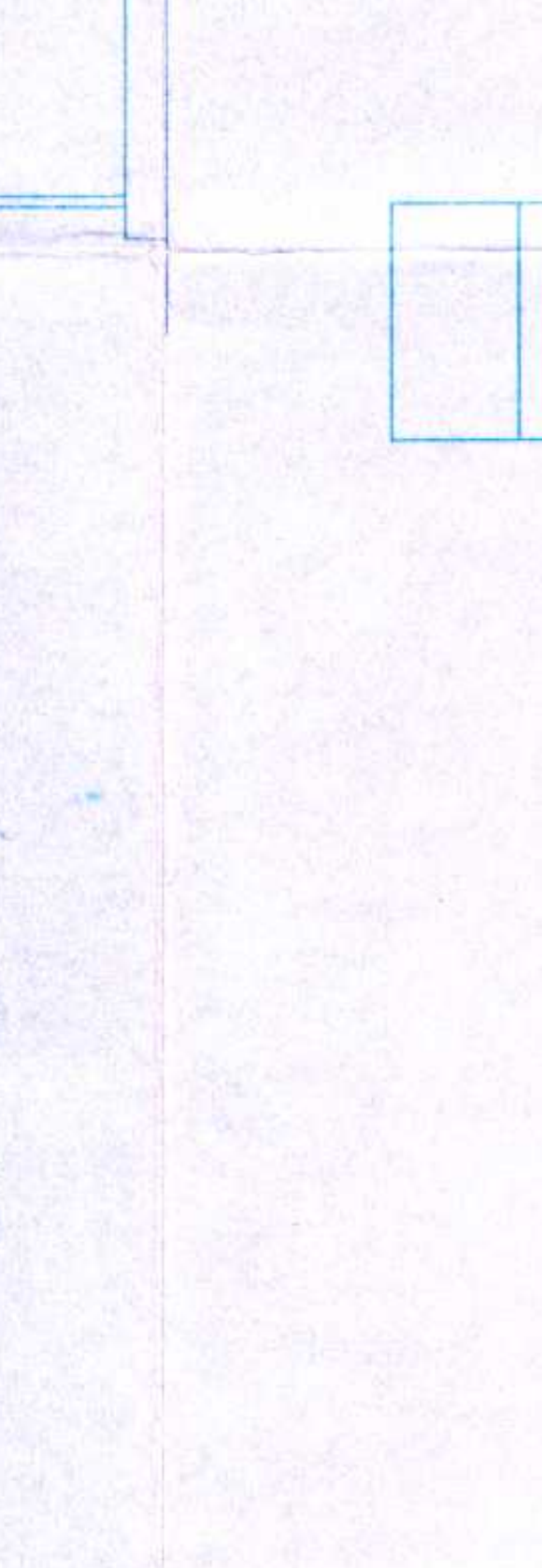
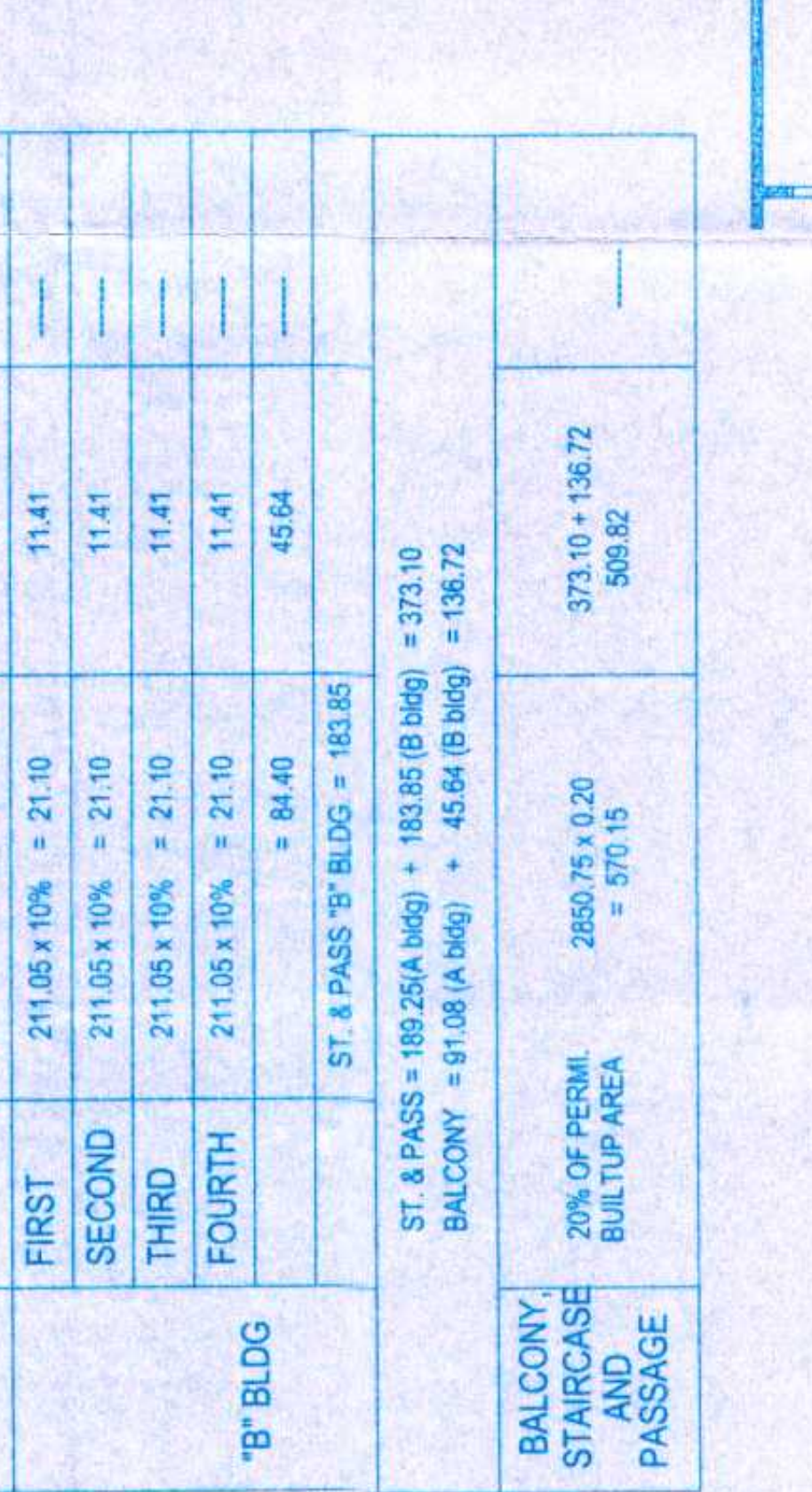
### ST & PASS AREA CALCULATION GROUND FLOOR FOR "B" BLDG

ITEM	DESCRIPTION	AREA
S	4.80 x 3.30	15.84
L	2.13 x 2.13	4.53
TOTAL		20.37

### ST & PASS AREA CALCULATION TYPICAL FLOOR FOR "B" BLDG

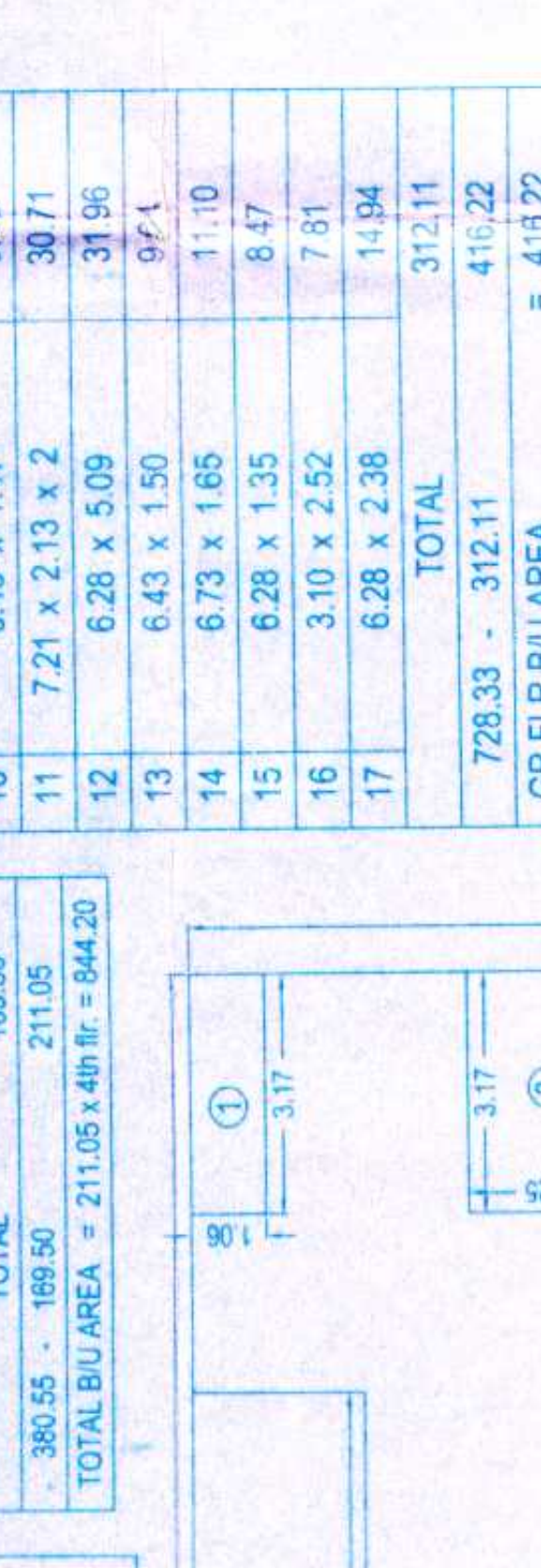
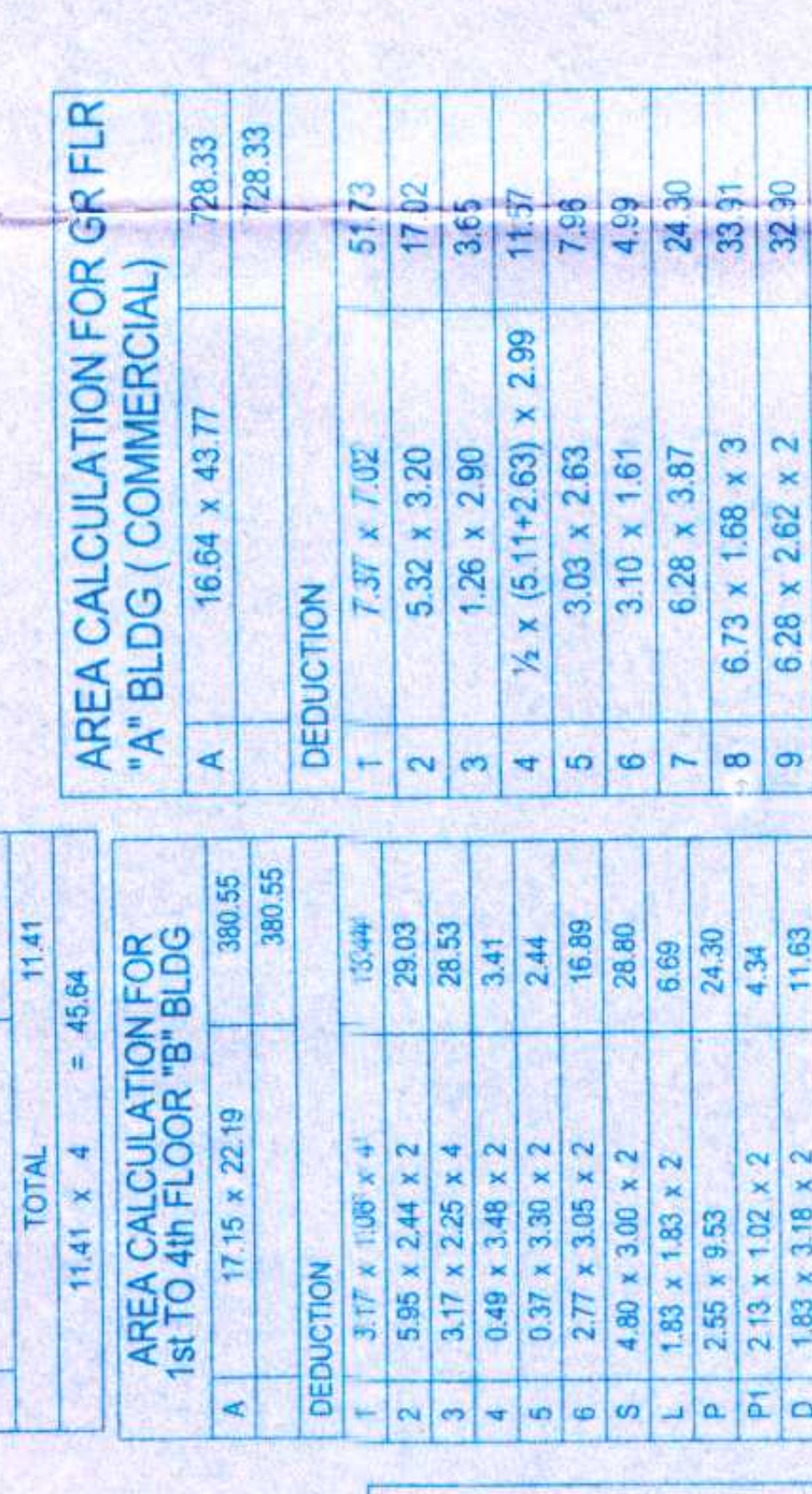
ITEM	DESCRIPTION	AREA
S	4.80 x 3.00	14.40
P	2.55 x 9.53	24.30
PI	2.13 x 1.02	2.17
TOTAL		40.87

### TOTAL STAIRCASE & PASS = 20.37 + 40.87 = 61.24



### AREA CALCULATION FOR GR FLR "A" BLDG (COMMERCIAL)

ITEM	DESCRIPTION	AREA
A	16.64 x 43.77	728.33
DEDUCTION		
1	7.37 x 7.02	51.73
2	5.32 x 3.20	17.02
3	1.26 x 2.90	3.65
4	7/4 x (5.11+2.63) x 2.99	11.37
5	3.03 x 2.63	7.96
6	3.10 x 1.61	4.99
7	6.28 x 3.87	24.30
8	6.73 x 1.68 x 3	33.91
9	6.28 x 2.62 x 2	32.90
10	6.43 x 1.47	9.45
11	7.21 x 2.13 x 2	30.71
12	6.28 x 5.09	31.96
13	6.43 x 1.50	9.64
14	6.73 x 1.65	11.10
15	6.28 x 1.35	8.47
16	3.10 x 2.52	7.81
17	6.28 x 2.38	14.94
TOTAL		312.11
728.33 - 312.11		416.22
GR FLR BU AREA		= 416.22



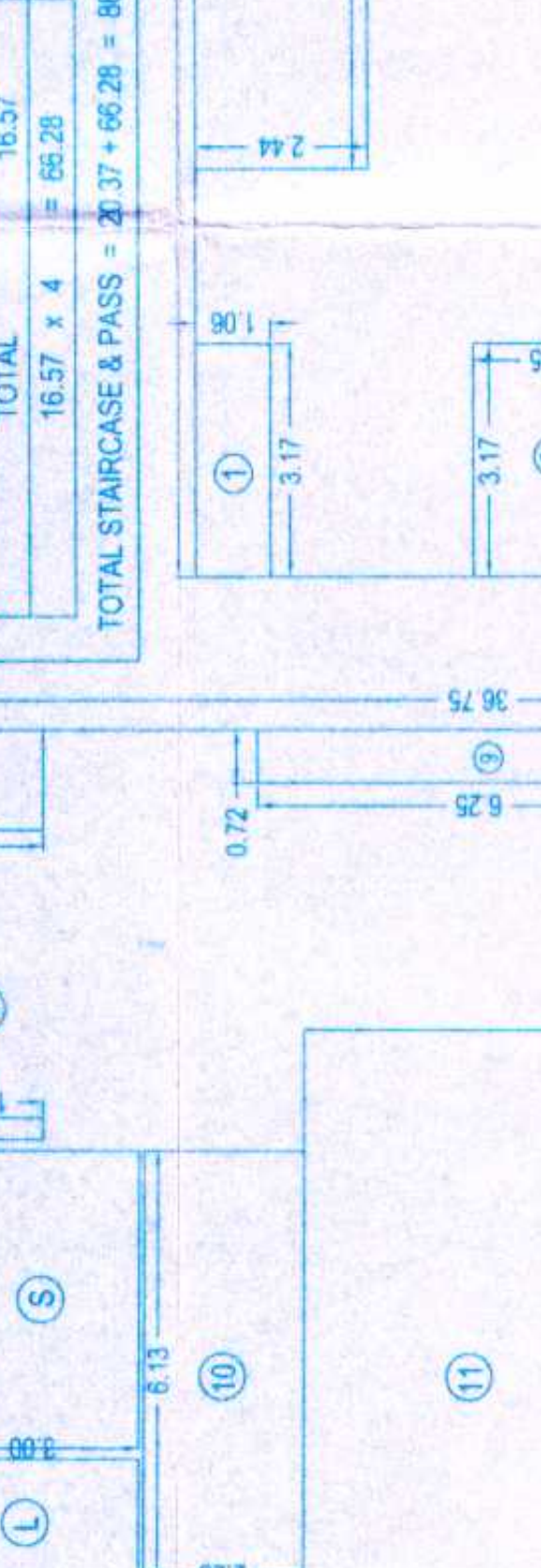
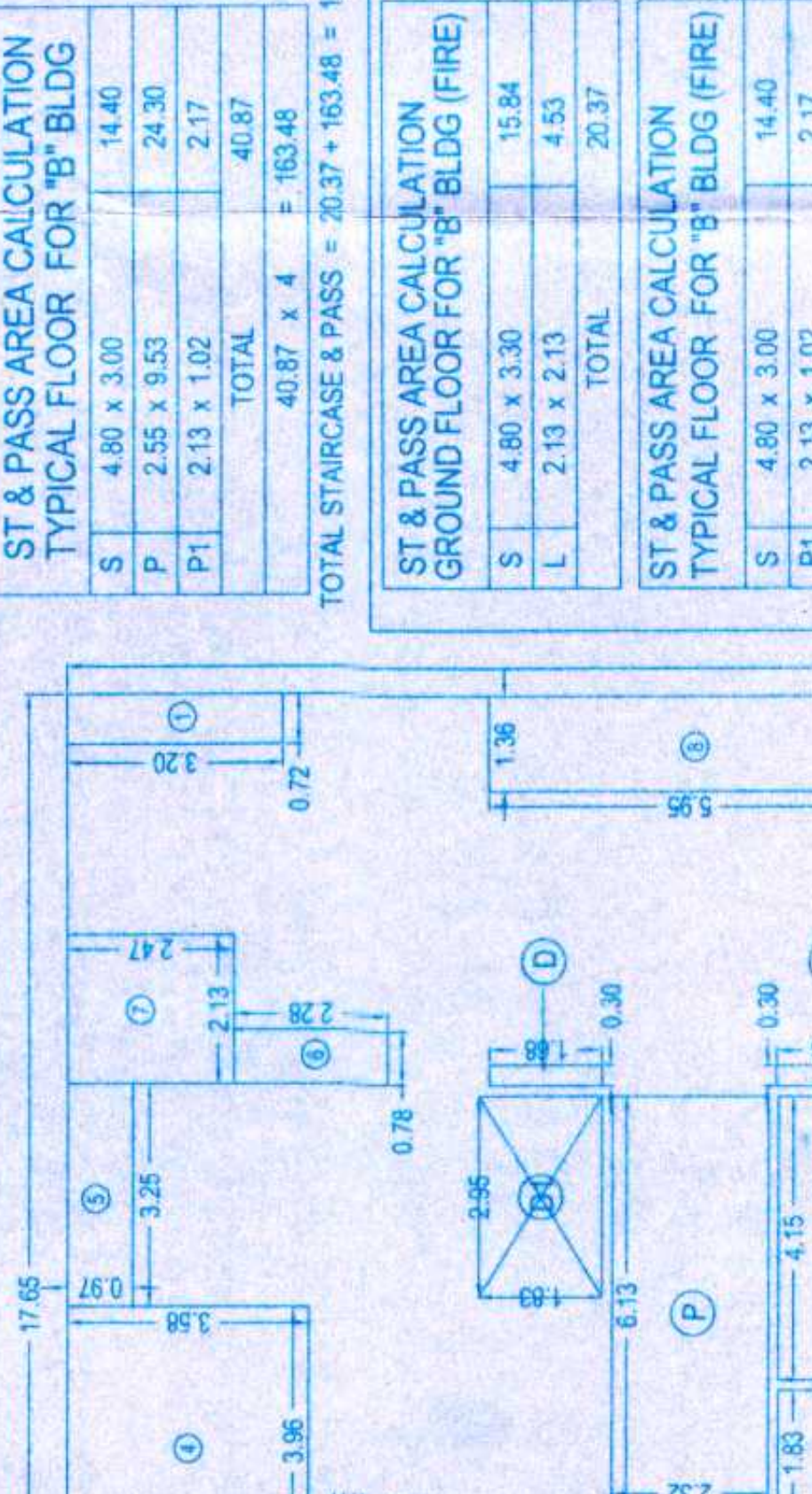
### ST & PASS AREA CALCULATION GROUND FLOOR FOR "A" BLDG

ITEM	DESCRIPTION	AREA
S	4.30 x 3.30 x 1	14.19
L	1.98 x 3.30 x 1	6.53
TOTAL		20.72

### ST & PASS AREA CALCULATION 1st to 4th FLOOR FOR "A" BLDG

ITEM	DESCRIPTION	AREA
S	4.15 x 3.30 x 1	13.69
PI	1.50 x 9.35	14.02
TOTAL		27.71

### TOTAL STAIRCASE & PASS = 20.72 + 110.84 = 131.56



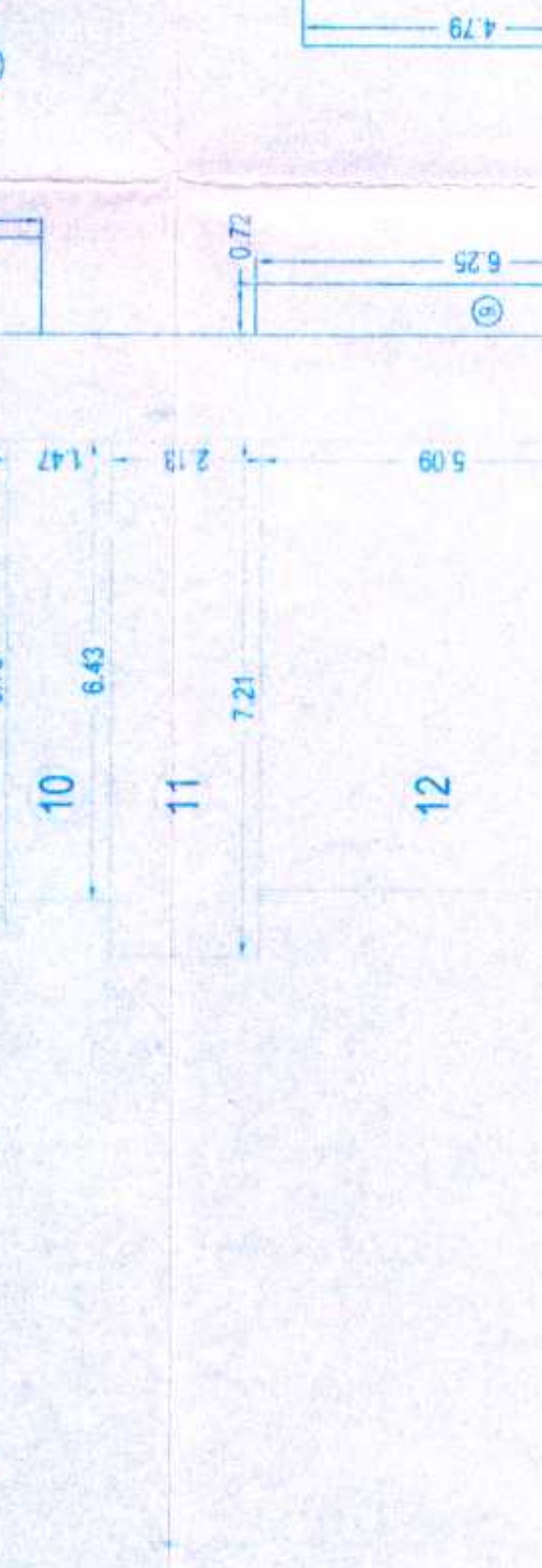
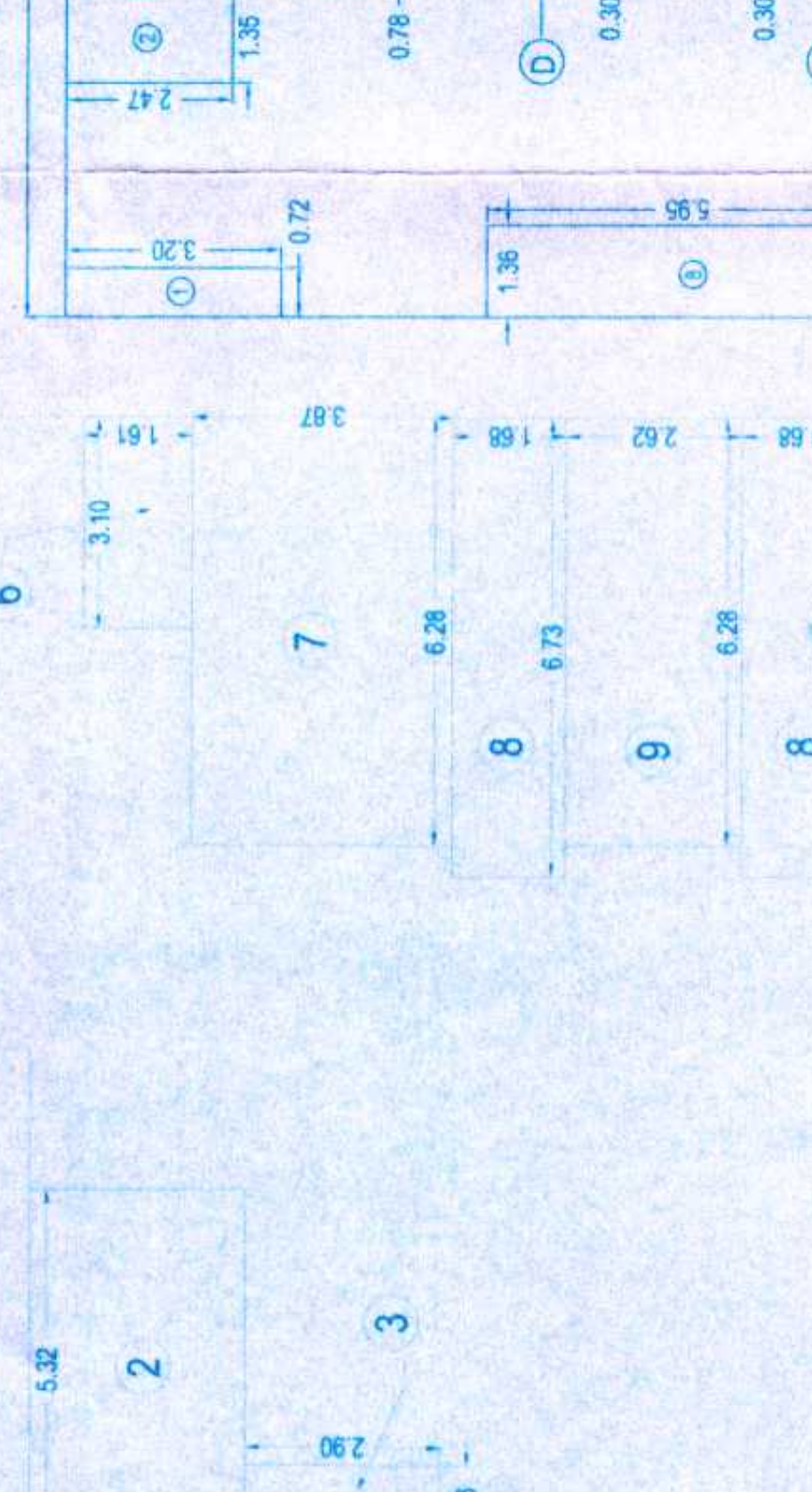
### ST & PASS AREA CALCULATION GROUND FLOOR FOR "A" BLDG (FIRE)

ITEM	DESCRIPTION	AREA
S	4.30 x 3.30 x 1	14.19
L	1.98 x 3.30 x 1	6.53
TOTAL		20.72

### ST & PASS AREA CALCULATION 1st to 4th FLOOR FOR "A" BLDG (FIRE)

ITEM	DESCRIPTION	AREA
S	4.15 x 3.30	13.69
PI	1.50 x 9.35	14.02
TOTAL		27.71

### TOTAL STAIRCASE & PASS = 20.72 + 110.84 = 131.56



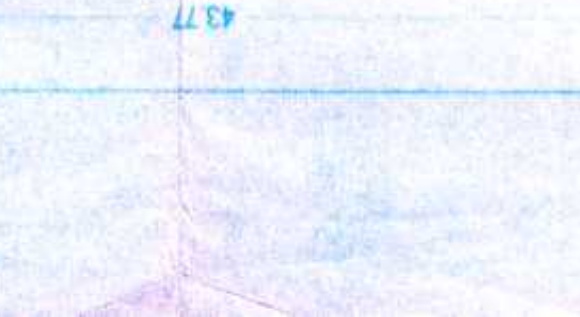
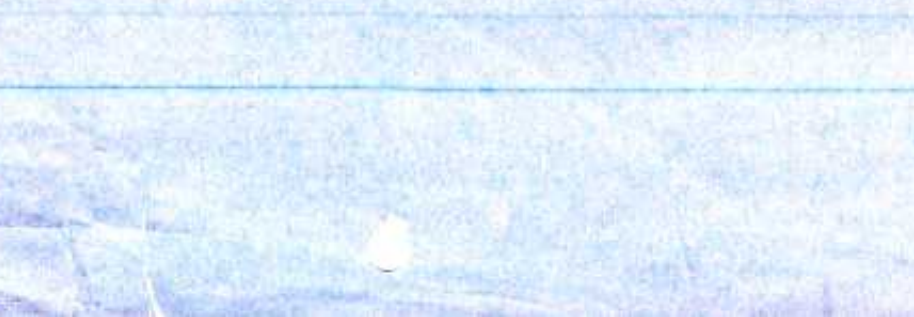
### ST & PASS AREA CALCULATION GROUND FLOOR FOR "A" BLDG

ITEM	DESCRIPTION	AREA
S	4.30 x 3.30 x 1	14.19
L	1.98 x 3.30 x 1	6.53
TOTAL		20.72

### ST & PASS AREA CALCULATION 1st to 4th FLOOR FOR "A" BLDG

ITEM	DESCRIPTION	AREA
S	4.15 x 3.30 x 1	13.69
PI	1.50 x 9.35	14.02
TOTAL		27.71

### TOTAL STAIRCASE & PASS = 20.72 + 110.84 = 131.56



### ST & PASS AREA CALCULATION GROUND FLOOR FOR "A" BLDG (FIRE)

ITEM	DESCRIPTION	AREA
S	4.30 x 3.30 x 1	14.19
L	1.98 x 3.30 x 1	6.53
TOTAL		20.72

### ST & PASS AREA CALCULATION 1st to 4th FLOOR FOR "A" BLDG (FIRE)

ITEM	DESCRIPTION	AREA
S	4.15 x 3.30	13.69
PI	1.50 x 9.35	14.02
TOTAL		27.71

### TOTAL STAIRCASE & PASS = 20.72 + 110.84 = 131.56



### ST & PASS AREA CALCULATION GROUND FLOOR FOR "A" BLDG

ITEM	DESCRIPTION	AREA
S	4.30 x 3.30 x 1	14.19
L	1.98 x 3.30 x 1	6.53
TOTAL		20.72

### ST & PASS AREA CALCULATION 1st to 4th FLOOR FOR "A" BLDG

ITEM	DESCRIPTION	AREA
S	4.15 x 3.30 x 1	13.69
PI	1.50 x 9.35	14.02
TOTAL		27.71

### TOTAL STAIRCASE & PASS = 20.72 + 110.84 = 131.56



### ST & PASS AREA CALCULATION GROUND FLOOR FOR "A" BLDG (FIRE)

ITEM	DESCRIPTION	AREA
S	4.30 x 3.30 x 1	14.19
L	1.98 x 3.30 x 1	6.53
TOTAL		20.72

### ST & PASS AREA CALCULATION 1st to 4th FLOOR FOR "A" BLDG (FIRE)

ITEM	DESCRIPTION	AREA
S	4.15 x 3.30	13.69
PI	1.50 x 9.35	14.02
TOTAL		27.71

### TOTAL STAIRCASE & PASS = 20.72 + 110.84 = 131.56



### ST & PASS AREA CALCULATION GROUND FLOOR FOR "A" BLDG

ITEM	DESCRIPTION	AREA
S	4.30 x 3.30 x 1	14.19
L	1.98 x 3.30 x 1	6.53
TOTAL		20.72

### ST & PASS AREA CALCULATION 1st to 4th FLOOR FOR "A" BLDG

ITEM	DESCRIPTION	AREA
S	4.15 x 3.30 x 1	13.69
PI	1.50 x 9.35	14.02
TOTAL		27.71

### TOTAL STAIRCASE & PASS = 20.72 + 110.84 = 131.56



### ST & PASS AREA CALCULATION GROUND FLOOR FOR "A" BLDG (FIRE)

ITEM	DESCRIPTION	AREA
S	4.30 x 3.30 x 1	14.19
L	1.98 x 3.30 x 1	6.53
TOTAL		20.72

### ST & PASS AREA CALCULATION 1st to 4th FLOOR FOR "A" BLDG (FIRE)

ITEM	DESCRIPTION	AREA
S	4.15 x 3.30	13.69
PI	1.50 x 9.35	14.02
TOTAL		27.71

### TOTAL STAIRCASE & PASS = 20.72 + 110.84 = 131.56



### ST & PASS AREA CALCULATION GROUND FLOOR FOR "A" BLDG

ITEM	DESCRIPTION	AREA
S	4.30 x 3.30 x 1	14.19
L	1.98 x 3.30 x 1	6.53
TOTAL		20.72

### ST & PASS AREA CALCULATION 1st to 4th FLOOR FOR "A" BLDG

ITEM	DESCRIPTION	AREA
S	4.15 x 3.30 x 1	13.69
PI	1.50 x 9.35	14.02
TOTAL		27.71

### TOTAL STAIRCASE & PASS = 20.72 + 110.84 = 131.56



### ST & PASS AREA CALCULATION GROUND FLOOR FOR "A" BLDG (FIRE)

ITEM	DESCRIPTION	AREA
S	4.30 x 3.30 x 1	14.19
L	1.98 x 3.30 x 1	6.53
TOTAL		20.72

### ST & PASS AREA CALCULATION 1st to 4th FLOOR FOR "A" BLDG (FIRE)

ITEM	DESCRIPTION	AREA
S	4.15 x 3.30	13.69
PI	1.50 x 9.35	14.02
TOTAL		27.71

### TOTAL STAIRCASE & PASS = 20.72 + 110.84 = 131.56



### ST & PASS AREA CALCULATION GROUND FLOOR FOR "A" BLDG

ITEM	DESCRIPTION	AREA
S	4.30 x 3.30 x 1	14.19
L	1.98 x 3.30 x 1	6.53
TOTAL		20.72

### ST & PASS AREA CALCULATION 1st to 4th FLOOR FOR "A" BLDG

ITEM	DESCRIPTION	AREA
S	4.15 x 3.30 x 1	13.69
PI	1.50 x 9.35	14.02
TOTAL		27.71

### TOTAL STAIRCASE & PASS = 20.72 + 110.84 = 131.56



### ST & PASS AREA CALCULATION GROUND FLOOR FOR "A" BLDG (FIRE)

ITEM
------